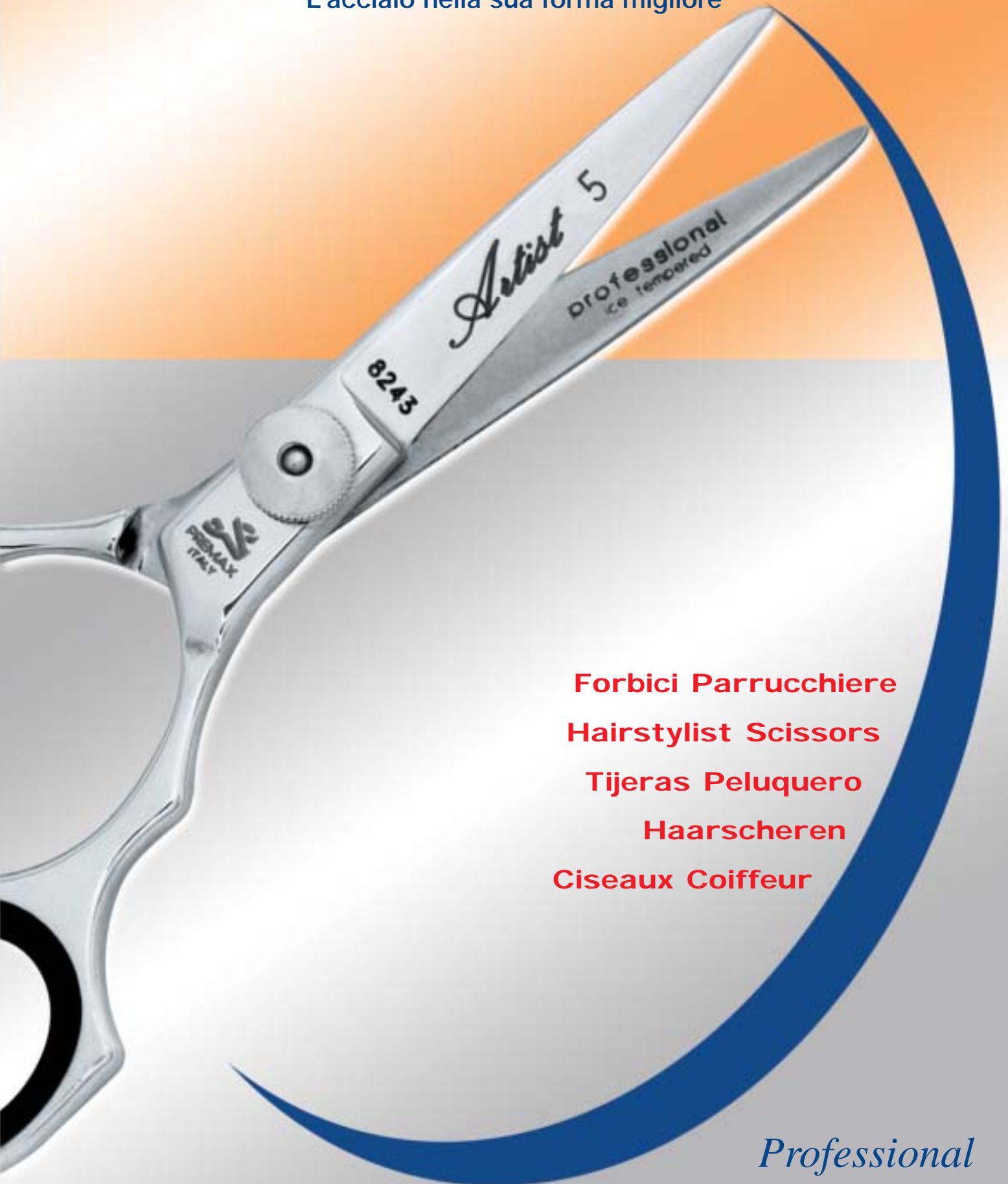




L'acciaio nella sua forma migliore



Forbici Parrucchiere
Hairstylist Scissors
Tijeras Peluquero
Haarscheren
Ciseaux Coiffeur

Professional



J



K



X



L

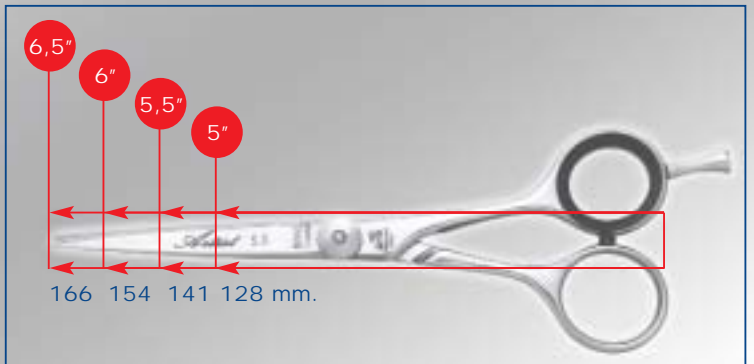


W



F

MISURE - SIZE - MEDIDAS - GRÖÖE - MESURES



PREMAX
23834 Premana (LC) - Italy - Via Giabbio
Tel. +39 0341.890.377 - 818.003 - Fax +39 0341.890.386
www.premax.it - e-mail: premax@premax.it

Artist

■ ERGONOMY & DESIGN ■



Art. 8242 5 1/2"



Art. 8243 5" - 6"



Art. 8244 5"



Art. 8246 5 1/2"



Art. 8241 5 1/2"

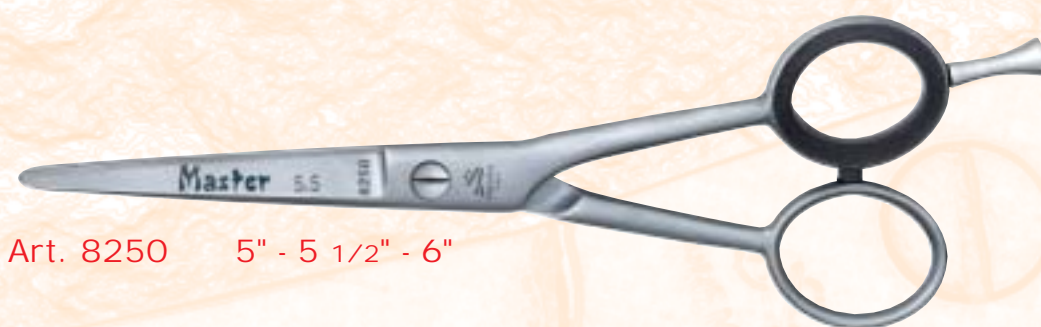
- I Caratteristiche Tecniche:** Acciaio inox al Cromo e Molibdeno. Durezza lame HRC 56-58. Lame incavate. Filo a rasoio.
- GB Technical Data:** Chromium and Molybdenum stainless steel. Blades hardness HRC 56-58. Hollow ground blades. Razor edge.
- E Datos Técnicos:** Acero inox al Cromo y Molibdeno. Dureza hojas HRC 56-58. Hojas rectificadas en hueco. Filo navaja.
- D Technische Eigenschaften:** Rostfreier Edelstahl mit Chrom und Molybdän. Gehärtete Klängen HRC 56-58. Holschliff. Rasiermesser.
- F Caractéristiques Techniques:** Acier inox au Chrome et Molybdène. Dureté des lames HRC 56-58, Lames rectifiées en creux. Fil à rasoier.

Master

■ PRECISION & SMOOTHNESS ■



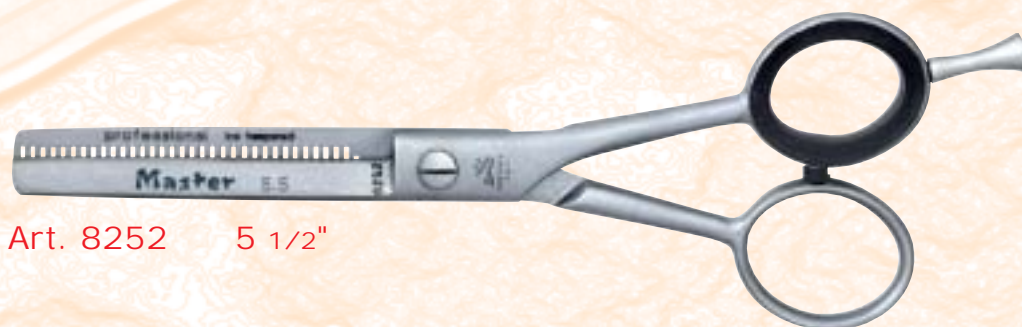
Art. 8237 5" - 5 1/2" - 6"



Art. 8250 5" - 5 1/2" - 6"



Art. 8251 5 1/2"
Per mancini, for left-hand, para zurdos,
für linkshand, pour gauchers.



Art. 8252 5 1/2"



I Caratteristiche Tecniche: Acciaio inox al Cromo. Durezza lame HRC 52-54. Un filo microdentato.

GB Technical Data: Chromium stainless steel. Blades hardness HRC 52-54. One serrated edge.

E Datos Técnicos: Acero inox al Cromo. Dureza hojas HRC 52-54. Un filo microdentado.

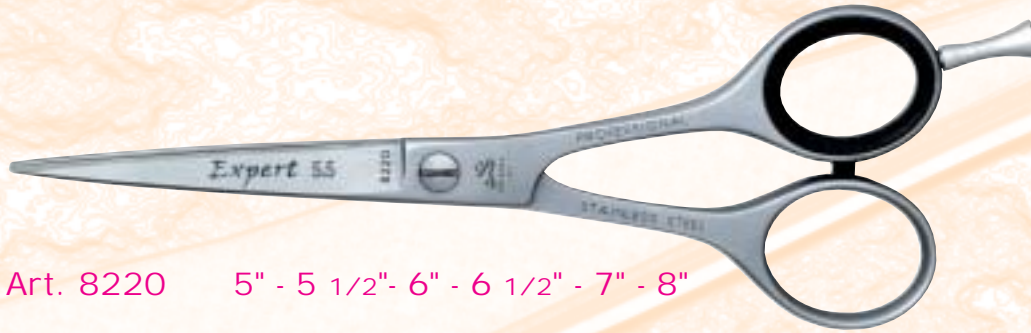
D Technische Eigenschaften: Rostfreier Chromstahl. Gehärtete Klingen HRC 52-54. Eine Schneide mit Microzahnung.

F Caractéristiques Techniques: Acier inox au chrome. Dureté des lames HRC 52-54. Un fil avec microdenture.

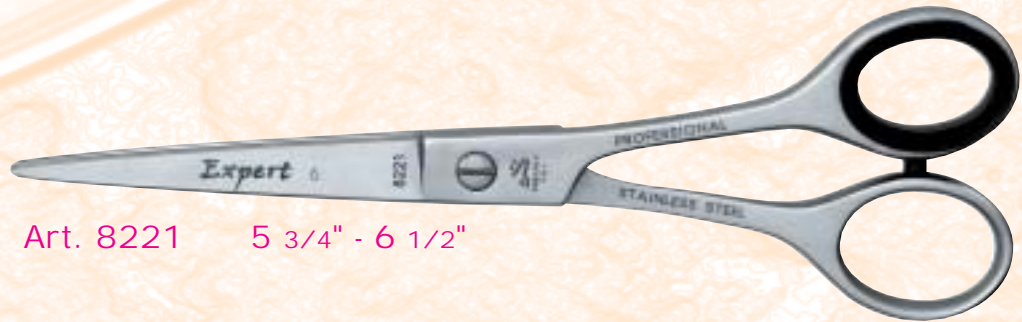
Master
&
Expert

Expert

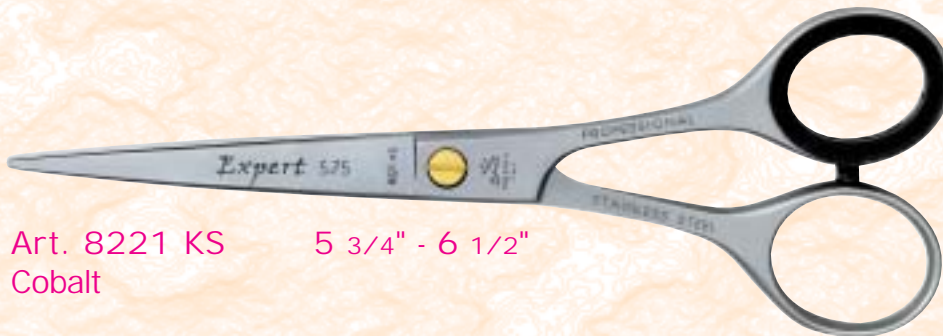
■ MODERN & FUNCTIONAL ■



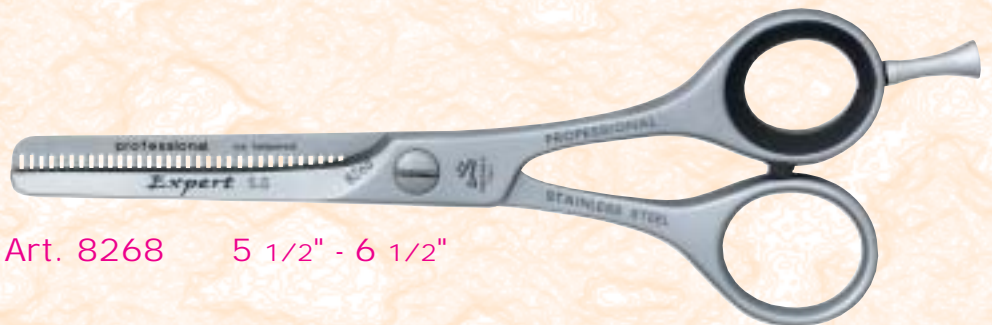
Art. 8220 5" - 5 1/2" - 6" - 6 1/2" - 7" - 8"



Art. 8221 5 3/4" - 6 1/2"



Art. 8221 KS 5 3/4" - 6 1/2"
Cobalt



Art. 8268 5 1/2" - 6 1/2"



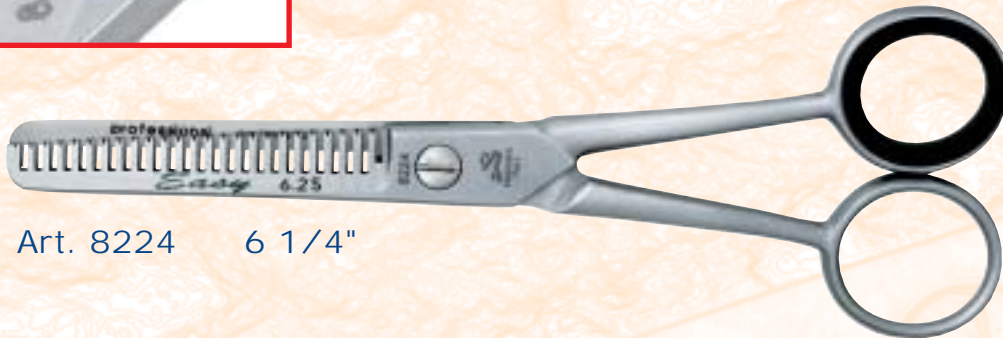
Art. 8269 5 1/2"



■ CLASSIC & CONVENIENT ■



Art. 8265 4 1/2" - 5" - 5 1/2" - 6" - 6 1/2"



Art. 8224 6 1/4"



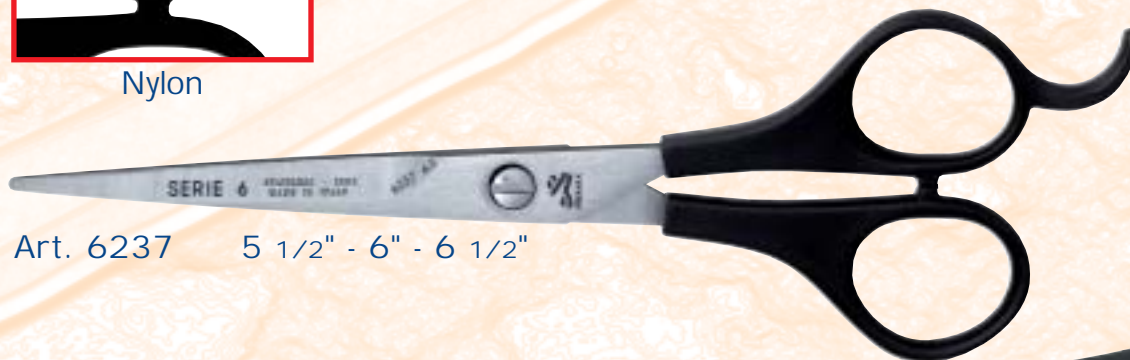
SERIE 6



Nylon



Art. 6236 5 1/2" - 6" - 6 1/2"



Art. 6237 5 1/2" - 6" - 6 1/2"



Art. 6270 6 1/2"

I Caratteristiche Tecniche: Acciaio inox al Cromo. Durezza lame HRC 52-54. Un filo microdentato.

GB Technical Data: Chromium stainless steel. Blades hardness HRC 52-54. One serrated edge.

E Datos Técnicos: Acero inox al Cromo. Dureza hojas HRC 52-54. Un filo microdentado.

D Technische Eigenschaften: Rostfreier Chromstahl. Gehärtete Klingen HRC 52-54. Eine Schneide mit Microzahnung.

F Caractéristiques Techniques: Acier inox au chrome. Dureté de lames HRC 52-54. Un fil avec microdenture.